



**ALFA International**  
THE GLOBAL LEGAL NETWORK

# LAW LAW LAND

## Becoming a Legal Star

**2024 FUTURE LEADERS PRACTICE GROUP SEMINAR**

**October 9-11, 2024**

**Beverly Hills Wilshire**

**Beverly Hills | CA**

HOLLYWOOD



[www.ALFAInternational.com](http://www.ALFAInternational.com)

# LAW LAW LAND

## Becoming a Legal Star

### 2023-2024 FUTURE LEADERS PRACTICE GROUP LEADERSHIP



**Eddy Hayes**  
*Chair, ALFA International  
Board of Directors*  
LEAKE & ANDERSSON, L.L.P.  
New Orleans, LA



**Andre Webb**  
*Chair, Future Leaders Practice Group*  
GERMAN, GALLAGHER  
& MURTAGH, P.C.  
Philadelphia, PA



**Kate Martz**  
*Marketing Chair, Future Leaders  
Practice Group*  
BAYLOR EVNEN WOLFE &  
TANNEHILL, LLP  
Lincoln, NE



**Julia Jimenez**  
*Program Chair, 2024 Future Leaders  
Practice Group Seminar*  
DANIEL COKER  
Oxford, MS



**Christin Krämer**  
*Chair-Emeritus, Future Leaders  
Practice Group*  
TIEFENBACHER  
Heidelberg, Germany

### 2024 FUTURE LEADERS PRACTICE GROUP SEMINAR

October 9-11, 2024

**Beverly Wilshire, A Four Seasons Hotel | Beverly Hills, CA**

Welcome to Beverly Hills, where, with planning, preparation and a little bit of luck, dreams come true! Join us as the next generation of ALFA International (ALFAI) leaders dance into the challenges and opportunities facing us all in “Law Law Land.”

Amongst the sparkling lights of Beverly Hills, the 2024 ALFAI Future Leaders Seminar will showcase the success that can be built on a foundation of excellent leadership, personal and professional growth and meaningful career goals. Presentations will explore what every young lawyer should know and what happens when our best-laid plans fall short. Additionally, an analysis of the fast-emerging uses of artificial intelligence (AI) in the legal world and its effect on research, firm billing and in-house applications will provide an understanding of opportunities for evolution. Our moderators and presenters will guide us through crisis planning from event to trial and sessions honing mediation skills and strategies to allow our clients and positions to shine.

Together, we will develop the confidence and talent to make bold decisions, ensuring our clients and practices are ready for the future. With an eye to the future, we will create careers that are adaptable to newly emerging trends and capable of navigating the highs and lows of the legal world to come.



**Julia Jimenez**  
*Program Chair, 2024 Future Leaders Practice Group Seminar*  
DANIEL COKER  
Oxford, MS

### About the Beverly Wilshire, A Four Seasons Hotel

The Beverly Wilshire, nestled in the heart of Beverly Hills, exudes timeless elegance and luxury. Its iconic facade, adorned with classic architecture, welcomes guests into a world of sophistication and opulence. With its prestigious location on Wilshire Boulevard, enjoy easy access to renowned shopping on Rodeo Drive and the many cultural attractions of Los Angeles, the Beverly Wilshire promises an unforgettable experience in La La Land!



# OCTOBER 9

# OCTOBER 10

**2:00 P.M. – 5:00 P.M.**

## **FACULTY REHEARSAL**

*Beverly Wilshire, A Four Seasons Hotel - Le Grand Trianon*

\*All moderators are encouraged to use this time to set-up a meeting with their panelists to review their session materials.

**2:00 P.M. – 6:00 P.M.**

## **EARLY REGISTRATION**

*Beverly Wilshire, A Four Seasons Hotel - Le Petit Trianon*

The festivities will start with registration and a welcome reception in La Petit Trianon at the Beverly Wilshire, A Four Seasons Hotel.

**5:30 P.M. – 6:30 P.M.**

## **CLIENT ONLY COCKTAIL HOUR**

**Hosted By The Future Leaders Practice Group Client Advisory Board**

*Beverly Wilshire, A Four Seasons Hotel - Rodeo Terrace*

This ALFA International clients only reception is a great opportunity to network with other in-house counsel attendees without ALFAI attorneys present.

**5:30 P.M. – 6:30 P.M.**

## **ALL ALFA INTERNATIONAL ATTORNEY MEETING**

*Beverly Wilshire, A Four Seasons Hotel - Le Grand Trianon*

\*All ALFA International attorneys are required to attend.

**6:30 P.M. – 9:30 P.M.**

## **WELCOME RECEPTION, BUFFET DINNER & REGISTRATION**

*Beverly Wilshire, A Four Seasons Hotel - Champagne Room*

Tonight's welcome dinner will give you the opportunity to relax, unwind and reconnect with friends both old and new at the historic and glamorous Beverly Wilshire.

**8:00 A.M. – 9:00 A.M.**

## **BREAKFAST BUFFET**

*Beverly Wilshire, A Four Seasons Hotel - CUT*

**9:00 A.M. – 12:15 P.M.**

## **PROGRAM SESSIONS**

*Beverly Wilshire, A Four Seasons Hotel - Le Grand Trianon*

**9:00 A.M. – 9:15 A.M.**

## **INTRODUCTORY REMARKS**

*Speakers:*



**Andre Webb**

*Chair, Future Leaders Practice Group*  
GERMAN, GALLAGHER & MURTAGH, P.C.  
Philadelphia, PA



**Julia Jimenez**

*Program Chair, 2024 Future Leaders Practice Group Seminar*  
DANIEL COKER  
Oxford, MS



**Jessica Zaroski Bauer**

*Chief Executive Officer*  
ALFA INTERNATIONAL  
Chicago, IL

## **What is ALFA International?**

ALFA International is the premier global network of independent law firms comprised of accomplished trial and business counsel. Founded in 1980, ALFAI was the first and remains one of the largest and strongest legal networks worldwide. ALFAI member firms meet high standards to be part of the network and are well respected by their peers in the legal and business community. ALFAI has 140+ member firms worldwide, including 80 U.S. firms maintaining offices in 95 of the 100 largest metropolitan areas and 60 international firms. Since ALFAI firms are not in direct competition, ALFAI attorneys build strong, trusted relationships with one another. ALFAI's mission is to utilize these relationships to provide high-quality, cost-efficient legal services wherever clients need them. When necessary, ALFAI attorneys can connect clients to their ALFAI colleagues anywhere worldwide whom they trust will handle their client's legal needs with the same attention and care.



# THURSDAY, OCTOBER 10

9:15 A.M. – 10:00 A.M.

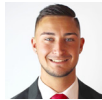
## BEFORE THE CURTAIN RAISES - PLANNING FROM PRE-CRISIS THROUGH TRIAL WITH THE CORRECT AUDIENCE IN MIND

Much litigation work occurs behind the scenes, outside of the courtroom setting. This session will provide an overview of the variety of pre-litigation strategies and early case processes to ensure preparation from pre-crisis to trial. The session will also discuss different handling strategies to play to each audience, whether the case is best suited for early resolution, dispositive motion practice, or trial.

### Speakers:



**Job Fickett**  
*Moderator*  
TAYLOR, DAY,  
GRIMM & BOYD  
Jacksonville, FL



**Nathaniel Schriffert**  
*Construction Claims  
Specialist*  
AUTO-OWNER'S INS. CO.  
Lakeland, FL



**Kelly Stephan**  
*Litigation Counsel*  
FLYNN GROUP  
San Francisco, CA



**Brooke Churchman**  
HALL & EVANS, LLC  
Denver, CO

10:00 A.M. – 10:15 A.M.

## BREAK

10:15 A.M. – 10:45 A.M.

## WHAT EVERY YOUNG LAWYER SHOULD KNOW: FROM A SENIOR COMPANY REPRESENTATIVE'S PERSPECTIVE

This panel will present best practices for young lawyers to manage client expectations, communicate with clients and maintain client relationships. The panel will include discussion and insight about what a senior client expects from young lawyers and how young lawyers can differentiate themselves to both bring in new business and keep business.

### Speakers:



**Kehl Friesen**  
*Co-Moderator*  
BAKER STERCHI  
COWDEN & RICE LLC  
Kansas City, MO



**Clarence Easterday**  
*Executive Advisor  
Risk Management*  
WESTERN EXPRESS, INC.  
Nashville, TN



**Michelle Storm**  
*Co-Moderator*  
MONACO COOPER  
LAMME & CARR, PLLC  
Albany, NY



**Molly Teas**  
HIGGS FLETCHER  
& MACK, LLP  
San Diego, CA

10:45 A.M. – 11:15 A.M.

## MAKING YOUR CLIENT'S STORY A HIT AT THE BOX OFFICE THROUGH MEDIATION

In nearly all cases, mediation is where the magic happens. Approaching and preparing for mediation is multifaceted and important. As the director, you must ensure your client's story is being told in an effective manner, your cast of characters is on board and knows their roles, and your audience – the mediator – is the right choice and has the information they need. Our panel looks forward to discussing and exploring how to put the pieces together for a mediation that's a critical darling.

### Speakers:



**Charles Kraft**  
*Moderator*  
BUTT THORNTON  
& BAEHR PC  
Albuquerque, NM



**Jeff Kaplan**  
*Risk Manager*  
UPS  
McKinney, TX



**Jamie Flowers**  
*Legal Counsel -  
litigation Manager*  
ILLINOIS CASUALTY  
COMPANY  
Rock Island, IL



**Stephanie Brochert**  
PLUNKETT COONEY  
Bloomfield Hills, MI

11:15 A.M. – 11:30 A.M.

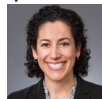
## BREAK

11:30 A.M. – 12:15 P.M.

## BLUES CLUB – WHEN THINGS GO SOUTH

This panel will highlight typical problems that young lawyers and specialists encounter in the corporate world and show strategies to overcome them. The speakers on this panel will explain the mindset, resilience and awareness needed to be a future leader without compromising your mental health and emotional state.

### Speakers:



**Annette Mijanovic**  
*Moderator*  
HAIGHT BROWN  
& BONESTEEL LLP  
Los Angeles, CA



**Peter Evans**  
*Director, Legal &  
Compliance*  
WOWZA MEDIA  
SYSTEMS, LLC  
Lakewood, CO



**Heather Magnuson**  
*Deputy General Counsel*  
SHAW INDUSTRIES  
GROUP, INC.  
Dalton, GA



**Dennis Schubert**  
TIEFENBACHER  
Heidelberg Germany

12:15 P.M. – 1:15 P.M.

## LUNCH BUFFET

*Beverly Wilshire, A Four Seasons Hotel - CUT*

# THURSDAY, OCTOBER 10

2:00 P.M. – 5:00 P.M.

## RAMP IT UP SKATEBOARD BUILD

*Beverly Wilshire, A Four Seasons Hotel - Champagne Room*

Most of us write off skateboards as a toy and distraction. But skateboards are a powerful hook for kids to help them make friends, practice resilience, express themselves and build confidence. Skateboarding is an amazing space for problem solving and determination. Kids work for hours on a trick until they can do it flawlessly. That type of dedication is a prized life skill. Help local children taste independence and give them their first skateboard that you'll assemble for them. Teams will assemble the boards and create meaningful artwork on the bottom as a message to the youth of the community.

7:00 P.M. – 10:00 P.M.

## RECEPTION & DINNER

*Ella Beverly Hills | 9360 Wilshire Blvd.*

7:00 p.m. – 7:30 p.m. Cocktail Reception

7:30 p.m. – 10:00 p.m. Buffet Dinner

Located a short walk from the Beverly Wilshire, attendees will enjoy a cocktail reception before being seated for a buffet dinner. Ella serves up a bold dinner menu created by Executive Chef Brian Min, with a variety of dishes that celebrate the Mediterranean, Asian and Italian flavors.



# FRIDAY, OCTOBER 11

**8:00 A.M. – 9:00 A.M.**

## **BREAKFAST BUFFET**

*Beverly Wilshire, A Four Seasons Hotel - CUT*

**9:00 A.M. – 11:45 A.M.**

## **PROGRAM SESSIONS**

*Beverly Wilshire, A Four Seasons Hotel - Le Grand Trianon*

**9:00 A.M. – 10:00 A.M.**

## **HOW ARE YOU GONNA BE A REVOLUTIONARY IF YOU'RE SUCH A TRADITIONALIST?**

Hear and participate in a Q&A-styled discussion with a panel of young future industry leaders and attorneys exploring how professionals in our career postures approach the topics of mentoring, goal planning, and mindfulness/emotional wellbeing of young professionals – the variety of workplace culture that may have never been a thought or priority, but ought to be. Are these things important? Does it matter whether these topics are appreciated on an individual and professional level?

*Speakers:*



**Matthew McColgan**

*Co-Moderator*  
GERMAN, GALLAGHER  
& MURTAGH, P.C.  
Philadelphia, PA



**Josh Morris**

*Claims Manager*  
CIRCLE K  
Raleigh, NC



**Julie Busch**

*Co-Moderator*  
JOHNSON & BELL, LTD.  
Chicago, IL



**Alan Nolley**

*Senior Litigation Counsel*  
FLYNN GROUP  
San Francisco, California

**10:00 A.M. – 10:15 A.M.**

## **BREAK**

**10:15 A.M. – 10:30 A.M.**

## **ALFA INTERNATIONAL HQ UPDATE**

This session will provide an overview of many new and some improved offerings available at ALFAI as well as resources and opportunities available to our clients.

*Speaker:*



**Jessica Zaroski Bauer**

*Chief Executive Officer*  
ALFA INTERNATIONAL  
Chicago, IL

**10:30 A.M. – 11:30 A.M.**

## **LEX MACHINA: HOW AI IS BECOMING A LAW MACHINE**

Technology is moving quickly and is seemingly impacting every area of life, including the law. This session will explore the ways in which AI technology is changing how businesses manage risk and liability and how attorneys utilize it in defending claims.

*Speakers:*



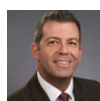
**Bryce Pfalzgraf**

*Moderator*  
BROWN & JAMES, P.C.  
St. Louis, MO



**Kim Bush**

*Associate General Counsel*  
BIC CORPORATION  
Shelton, CT



**Shaun Jackson**

*Executive Director, Risk and Insurance*  
PANDA RESTAURANT GROUP  
Rosemead, CA



**Anna Mallen**

WHITFIELD & EDDY LAW  
Des Moines, IA

**11:30 A.M. – 11:45 A.M.**

## **CLOSING REMARKS**

*Speakers:*



**Andre Webb**

*Chair, Future Leaders Practice Group*  
GERMAN, GALLAGHER & MURTAGH, P.C.  
Philadelphia, PA



**Julia Jimenez**

*Program Chair, 2024 Future Leaders Practice Group Seminar*  
DANIEL COKER  
Oxford, MS



# SPEAKERS

**JESSICA ZAROSKI BAUER** joined ALFA International (ALFAI) in 2004 as a Coordinator of Events & Member Services. She then worked for several years as a Marketing Manager, Chief Events Officer and Chief Operating Officer. After 17 years with the association, she accepted her current role as Chief Executive Officer. In this position, she is the strategic thought leader of the organization, working closely with the Board of Directors and the various ALFAI committees. She manages headquarters staff and maintains constant communication with association members. Jessica oversees the member recruitment, development and retention programs, as well as the organization's marketing and business development initiatives. Prior to joining ALFA International, she worked in the marketing department of the Chicago-based law firm of Gardner, Carton & Douglas, LLP (now Faegre Drinker Biddle & Reath). She is a graduate of the University of Iowa Tippie College of Business (Go Hawkeyes!) and is an avid college football fan. In her spare time, Jessica enjoys family time with her husband, Harry, and her two young daughters, Greta and Vivian. She also enjoys swimming in Lake Michigan, playing beach volleyball and watching Oscar-nominated movies.

**STEPHANIE BROCHERT** is an associate with Plunkett Cooney, ALFA International's member firm in Michigan, and is a member of the firm's Insurance Coverage Practice Group. She advises and counsels carriers and claims professionals with respect to complex issues of policy interpretation, litigation strategy and extra-contractual liability. Admitted to practice law in New York, New Jersey and Michigan, Stephanie represents regional, national and international insurance carriers in property and casualty disputes, including high-profile claims relating to construction defects, premises liability and long-tail environmental liability.

**KIM BUSH** is an Associate General Counsel for North America at BIC Corporation. In this role, Kim leads the North American legal team for litigation and claims matters, including those related to product liability. She also collaborates with and supports global teams, particularly as they relate to Group Lighter strategic matters in North America. Prior to joining BIC, Kim worked at a global insurance company in multiple positions with increasing responsibility, most recently in the role of Vice President and Head of U.S. Program Claims and Global Third-Party Administrator Operations. In this role, Kim led and managed an internal North American and London-based team, as well as multiple outsourced third-party administrator teams, handling high exposure and complex cases involving a diverse portfolio of nationally litigated and non-litigated cases. Kim also worked as a litigator and trial attorney in private practice in Connecticut handling commercial litigation, bankruptcy, and professional and general liability insurance defense matters. Kim holds her law degree from Quinnipiac University School of Law and her undergrad from Southern Connecticut State University.

**JULIE BUSCH** is a shareholder of the ALFA International member firm of Johnson & Bell, Ltd., located in Chicago, Illinois. Julie concentrates her practice in general negligence, as well as transportation and retail litigation. She has assisted with all aspects of litigation, mediation, settlement, and jury trials for large, complex disputes in transportation litigation, complex brain injury, and retail litigation. Her clients include transportation companies, refuse and recycling companies, food Companies and retailers.

**BROOKE CHURCHMAN** is a member of Hall & Evans, LLC, the ALFA International member firm in Denver, Colorado. Brooke's practice focuses on defending personal injury matters, including commercial transportation litigation, auto claims, premises claims and employment matters. Brooke also represents niche businesses that operate app-based technology and marketplace platforms in the gig economy. She graduated from the University of Oklahoma with a B.S. in Zoology and earned her J.D. Before entering private practice, she served as a law clerk to the Honorable Judge Raymond Moore in the U.S. District Court for the District of Colorado and as assistant general counsel with the Oklahoma Department of Public Safety. Brooke was named by 5280 Magazine as a top lawyer in Transportation and has been (and is) selected for inclusion in Colorado's "Rising Stars." Brooke is a member of ALFAI's Future Leaders Forum, Transportation, Gig Economy and Hospitality & Retail Practice Groups.

**CLARENCE EASTERDAY** is the Executive Advisor - Risk Management for Western Express, Inc., a Nashville-based transportation company. Clarence's responsibilities at Western Express include overseeing the safety programs, assisting with risk management, and advising on the evaluation and resolution of claims. He works closely with defense counsel in case preparation and strategy and is active in the mediation process. In addition to his role at Western Express, Clarence is a mediator in the state of Tennessee.

**PETER EVANS** serves as the Director of Legal and Compliance at Wowza Media Systems, LLC. His role encompasses several key responsibilities, including managing patents and trademarks, handling transactional legal work, ensuring export compliance, and managing various other intellectual property (IP) matters. Additionally, Peter is responsible for overseeing Wowza's privacy and security efforts, which include compliance with GDPR, CCPA, and SOC 2 Type II standards. Although licensed to practice law in the state of Washington, Peter works out of Wowza's headquarters located in Lakewood, Colorado. He holds a background in economics, having earned both his undergraduate and master's degrees from the University of Utah. Peter further pursued his legal education at Gonzaga University, where he obtained his law degree.

# SPEAKERS

**JOB FICKETT** is an attorney with Taylor, Day, Grimm & Boyd, ALFA International's member firm in Jacksonville, Florida. He is an experienced litigator. Combining persuasive writing, tenacity in the courtroom, and an aptitude for problem-solving, Job's practice is focused on offering creative legal and business solutions across numerous litigation practice areas. Job also regularly advises entrepreneurs and small-to-mid-sized businesses from start-up phases through corporate governance issues and best practices for litigation avoidance. He is admitted to practice in all state and federal courts in Florida. In his career, Job has represented general contractors, subcontractors, banks, real estate brokerages, bankruptcy and personal trustees, software developers, insurance carriers, grocery stores, law firms, medical device manufacturers, charter airlines and family businesses, to name a few. He has significant experience representing both plaintiffs and defendants. Before joining Taylor Day, Job was an attorney at a regional business litigation boutique and started his career at a nationwide litigation firm.

**JAMIE FLOWERS** received her Bachelor's Degree from Bradley University. Thereafter, Jamie attended Valparaiso University School of Law, where she received her Juris Doctorate Degree. During law school, Jamie clerked for the United States Attorney's Office for the Northern District of Indiana, Hammond Division. She also served as a judicial extern for the Honorable Andrew P. Rodovich, Magistrate Judge for the United States District Court, Northern District of Indiana. After law school, Jamie worked as a contract attorney for State Farm. In 2011, she joined Illinois Casualty Company as Litigation Counsel, supervising a variety of litigated claims, including dram shop, food contamination, premises liability, negligence, employment practices liability, and property cases. Ms. Flowers served as Associate Legal Counsel, Legal Counsel, and Associate Litigation Manager before being promoted to Senior Counsel and Litigation Manager for Illinois Casualty Company. She heads up the Litigation Unit, supervising the handling of all litigated claims while spearheading various Insurtech initiatives for claims functions. She has served as the Legal Department's representative on the Claims Committee, Product Development Committee, Internal Reinsurance Committee, State Expansion Committee, and Benefits Oversight Committee. She currently chairs the Company's Mergers & Acquisitions Committee. Ms. Flowers has spoken at national industry conferences on the following topics: Handling High Exposure Casualty Claims, Restaurant Liability, Multiple Claimants/Minimizing Exposures, and Effective Mediation Strategies. She serves on the Property Liability Research Bureau's Claims Conference Planning Committee and is the Vice Chair for the 2025 PLRB Claims Conference. She was also a nominee at the inaugural 2019 APCA Emerging Leaders Conference.

**KEHL FRIESEN** is a member of Baker Sterchi Cowden & Rice LLC in Kansas City, Missouri, where he represents a multitude of clients in matters involving personal injury, product liability, gig economy, premises liability, employment, and general liability matters. Kehl practices in a wide variety of industries, including automotive, construction, hospitality, healthcare, insurance, and medical devices. Kehl has achieved successful verdicts in federal and state courts. Kehl was listed as a Best Lawyers: Ones to Watch in America in 2023 and 2024, received an Up & Coming Award from Missouri Lawyers Media in 2021 and has been recognized as Missouri and Kansas Super Lawyers Rising Star since 2022. After graduating from the University of Kansas School of Journalism, Kehl earned his J.D. from the University of Missouri-Kansas City. Kehl is a member of ALFA International's for the Hospitality & Retail, Gig Economy, Product Liability & Complex Torts, and Future Leaders practice groups.

**SHAUN JACKSON** is the Executive Director of Risk Management for Panda Restaurant Group, the world leader in Asian dining experiences and parent company of Panda Inn, Panda Express and Hibachi-San. Over the last 23 years, he has led the risk management departments of many other restaurant companies in many states across the US, including the publicly traded California-based chicken chain El Pollo Loco. Others include El Torito, Acapulco, Chevys, Marie Callender's and Perkins and food manufacturers Real Mex Foods and Foxtail Foods. In his current role, he also oversees the company's Internal Audit and Compliance function. His experience extends to the retail world and includes oversight of Human Resources and Benefits functions for multi-state and multi-unit companies. Shaun serves on several industry boards and takes an active role in the risk community with various educational groups and advisory boards.

**JULIA JIMENEZ** is a shareholder with Daniel Coker, the ALFA International member firm in Oxford, Mississippi. She focuses her practice on general defense litigation, including product liability and hospitality, in both state and Federal courts. Before transitioning to civil litigation, Julia's practice was devoted to family law. Julia has the distinction of being recognized as a Best Lawyers in America® "Ones to Watch" in two practice areas: personal injury litigation defense and product liability defense. Julia is a member of the Steering Committee of ALFA International's Hospitality & Retail Practice Group and the Future Leaders Practice Group. Julia is the Women's Initiative Liaison to the 2023 ALFA International Hospitality & Retail Practice Group. She is very active in the Mississippi Bar, including serving as Oxford Regional Chair of the High School Mock Trial Competition for eight years. She is a member of the Advisory Board of the L.O.U. Barksdale Boys and Girls Club and is a life member and past president of the Junior Auxiliary of Oxford. Julia has two children and enjoys yoga, reading and DIY projects.



# SPEAKERS

**JEFF KAPLAN** is a 20-year UPSer, with the last 10 years in the Risk Management Department. He received his BS in Business Management and Finance from Brooklyn College. He is currently working towards his MBA with a concentration in Global Leadership from Colorado Technical University. Jeff currently oversees all casualty claims (WC, Auto, GL) for Texas, Oklahoma, Colorado, Arizona, Utah, and New Mexico. He has led UPS's efforts in their early resolution strategy, paving the way for the rest of the organization. He conducts approximately 75-100 mediations per year. Jeff is currently serving on the ALFAI Future Leaders Client Advisory Board. He also serves on the TDAC (Trucking Defense Advocacy Conference) Client Advisory Board and is the President of the Modern Toast chapter of Toastmasters.

**CHARLES KRAFT** is a shareholder, director, and corporate officer with ALFA International member firm Butt Thornton & Baehr PC in Albuquerque, New Mexico. Charlie's practice of law is focused on catastrophic personal injury/wrongful death matters, product defect/liability, trucking/transportation, and professional liability and medical negligence matters. Charlie is a member of his firm's Rapid Response team, providing 24/7 on-site response and investigation in a variety of matters (not just transportation), and he is licensed to practice in all state and federal courts in New Mexico. Charlie is also a member of ALFAI's Future Leaders Practice Group, Transportation Practice Group, and the Transportation Steering Committee.

**HEATHER MAGNUSON** currently serves as Deputy General Counsel at Shaw Industries Group, Inc. Heather supports Shaw's General Counsel and Vice President, Chief Legal & Advocacy Officer and various business units by/through coordination of internal and external resources including, but not limited to, retention of outside counsel and service providers. Heather's day-to-day responsibilities include overseeing and attending to issues relating to the Litigation Practice Group of Shaw's Corporate Legal Department. Her primary responsibilities include providing legal advice as well as the management of litigation throughout the lifecycle of a case. Much of her current practice involves issues pertaining to product claims, personal injury lawsuits, breach of contract disputes, and construction defect claims.

**ANNA MALLEN** is an attorney with Whitfield & Eddy Law, ALFA International's member firm in Des Moines, Iowa. She is a member of the litigation practice group and works with clients to defend against labor & employment, transportation, and other commercial disputes. Her labor and employment client engagements include civil rights and wrongful termination complaints, non-compete and other contract disputes, and advising. Anna's representation encompasses all aspects of litigation, including investigation, mediation, negotiation, trial, appeals, and collections.

**MATTHEW MCCOLGAN** is a partner with the ALFA International member firm of German, Gallagher & Murtagh, P.C. in Philadelphia, Pennsylvania. Matt is a key player in the firm's transportation practice, defending trucking and transportation companies in cases ranging from catastrophic injuries to property damage and cargo claims. He also handles product and premises liability, as well as other casualty matters. Matt's practice consists not only of defending transportation matters in suit but also of providing 24/7 support to investigate accidents and losses when they occur and counseling clients about how to manage losses presuit. His practice covers all of New Jersey and Pennsylvania at both the state and federal level. Beyond the billable hour, Matt is a member of the Philadelphia Association of Defense Counsel's Executive Committee and participates on the steering committees for both ALFAI's Transportation and Insurance practice groups. Matt is also a member of ALFAI's Future Leaders Forum and TIDA's Young Professionals Committee.

**ANNETTE MIJANOVIC** is a partner at the ALFA International member firm Haight Brown & Bonesteel LLP, in Los Angeles, California, where she began her career as a summer associate sixteen years ago. She is a member of the firm's Transportation, Business Solutions and Products Liability practice groups. She has served as lead counsel in trials involving transportation and commercial litigation disputes in state and federal court. She is a member of the firm's Immediate Response Team for transportation accidents and heads the firm's continuing education program, the Little Red Schoolhouse. She is admitted to practice law in all California state and federal courts.

**JOSH MORRIS** is a Claims Manager in Circle K's Risk Management Department. Circle K has become one of the most widely recognized convenience store brands, known worldwide for quality products and great customer service. Josh has been with Circle K for 12 years in various positions and is currently responsible for overseeing Circle K's premise liability and transportation claims. Josh is a graduate of East Carolina University with a degree in Business Management.

**ALAN NOLLEY** serves as Senior Litigation Counsel for Flynn Restaurant Group, America's largest restaurant franchisee, which owns and operates over 2,300 restaurants nationwide. Alan represents the Company in a wide range of litigation involving business, commercial and tort disputes, and provides legal support for its operations, including strategic counsel on pre-litigation, risk management and contract issues. Alan is an experienced trial lawyer who has managed all aspects of litigation and has played a lead role in trials, as well as arbitration. Prior to joining Flynn Restaurant Group in 2021, Alan was in private practice in the San Francisco office of a regional law firm where he served on its "parachute" trial team.

# SPEAKERS

**BRYCE PFALZGRAF** is an attorney with Brown & James, P.C., the ALFA International member firm in Saint Louis, MO. His practice predominantly involves personal injury defense including premises liability, products liability, transportation, and medical malpractice related claims. He has experience in all aspects of litigation from initial investigation to post-trial pleadings.

**NATHANIEL SCHRIFERT** attended Florida Southern College in Lakeland, Florida graduating in 2017 with a Degree in Health Care Administration with a minor in Biology as well as Business Management. He joined Auto-Owners Insurance Company later that year and is approaching his 7th year with the company. Nate originally started in Auto claims, then progressed into Bodily Injury for both first as well as third party claims. In January 2020, Nate moved into the Construction Defect Branch and has been serving in that position since. His competency in Construction claims handling has him well-positioned to move into a management role with Auto-Owners Insurance Company in the future.

**DENNIS SCHUBERT** is a lawyer at Tiefenbacher, the ALFA International member firm in Germany. After studying law in Frankfurt am Main, Germany, he was admitted to the German Bar in 2022. He joined Tiefenbacher in 2022 and is part of the firm's International Division. Dennis focuses on advising clients in an international context on commercial and corporate law matters. He also specializes in distribution law.

**KELLY STEPHAN** serves as Litigation Counsel for Flynn Group, America's largest restaurant franchisee, which owns and operates over 2,300 restaurants nationwide, over 400 restaurants internationally, and a number of Planet Fitness gyms. Kelly represents the Company in a wide range of litigation involving business, commercial, and tort disputes, and provides legal support for its operations, including strategic counsel on pre-litigation, risk management and contract issues. Kelly has managed all aspects of litigation and has played a lead role in trials for the Company.

**MICHELLE STORM** is an attorney with Monaco Cooper Lamme & Carr, PLLC, ALFA International's member firm in Albany, New York. Michelle represents physicians, health professionals, hospitals, healthcare facilities, pharmacists, and pharmacies, concentrating on professional liability matters. In addition, she litigates matters for individuals, local businesses, and national corporations in the professional services, hospitality and retail, manufacturing, and food and beverage industries. Michelle received her undergraduate degree from the State University of New York and her law degree from Albany Law School.

**MOLLY TEAS** is an attorney with Higgs Fletcher & Mack, LLP, ALFA International's member firm in San Diego, California. Molly defends injury actions in a variety of civil and commercial litigation, including against transportation and rideshare companies, premises owners, and federally recognized Indian tribes. Molly's practice primarily focuses on the transportation industry, where she defends trucking companies, rideshare companies, and commercial entities in personal injury litigation. She also has experience representing clients in premises and product liability cases. Molly has experience defending clients in both jury and bench trials to verdict. In January 2024, the San Diego Defense Lawyers honored Molly as the organization's "Outstanding New Attorney."

**ANDRE WEBB** is a partner at German, Gallagher & Murtagh, P.C., the ALFA International member firm in Philadelphia, Pennsylvania. Andre defends insured and self-insured entities in a variety of litigation matters. Prior to joining the firm, Andre was Trial Counsel for a large Insurance Company where he handled a wide variety of cases, including premises liability, product liability, dram shop/ liquor liability cases and motor vehicle accidents, including UM/ UIM claims. He represents niche businesses that operate app-based technology and marketplace platforms in the gig economy. Andre has considerable jury trial experience in Philadelphia and surrounding counties. Andre has also handled appellate matters before the Pennsylvania Superior Court.

# GENERAL INFORMATION

## MEETING LOCATION

### BEVERLY WILSHIRE, A FOUR SEASONS HOTEL

9500 Wilshire Blvd.

Beverly Hills, CA 90212

Tel: (310) 275-5200

[www.fourseasons.com/beverlywilshire](http://www.fourseasons.com/beverlywilshire)

## REGISTRATION

Please contact ALFAI Headquarters to register.

ATTENDANCE IS OPEN ONLY TO MEMBERS OF ALFA INTERNATIONAL AND THEIR INVITED GUESTS AND IS LIMITED TO AGES 21+.

## ATTIRE

The attire for the educational sessions and social events throughout the conference is business casual.

## SPECIAL ACCOMMODATION

If you need any special accommodations, including a nursing room, special dietary meals, ADA access or other needs, please reach out to ALFAI staff in advance of the meeting and we will ensure that necessary accommodations are provided.

## CLE CREDIT

ALFA International certifies that this program has been approved for 4.5 hours of General CLE credit in the States of Illinois, Pennsylvania, Tennessee and California. If you need credit in another state, please contact that state bar regarding the necessary requirements to obtain CLE credit. ALFA International staff is available to assist in any way possible but you must apply individually to obtain credit in your particular state.

## SEMINAR CONTACTS

- **Aria Trombley Wolf**  
[awolf@alfainternational.com](mailto:awolf@alfainternational.com)
- **Michelle Jones**  
[mjones@alfainternational.com](mailto:mjones@alfainternational.com)

## STAY CONNECTED WITH ALFA INTERNATIONAL

